

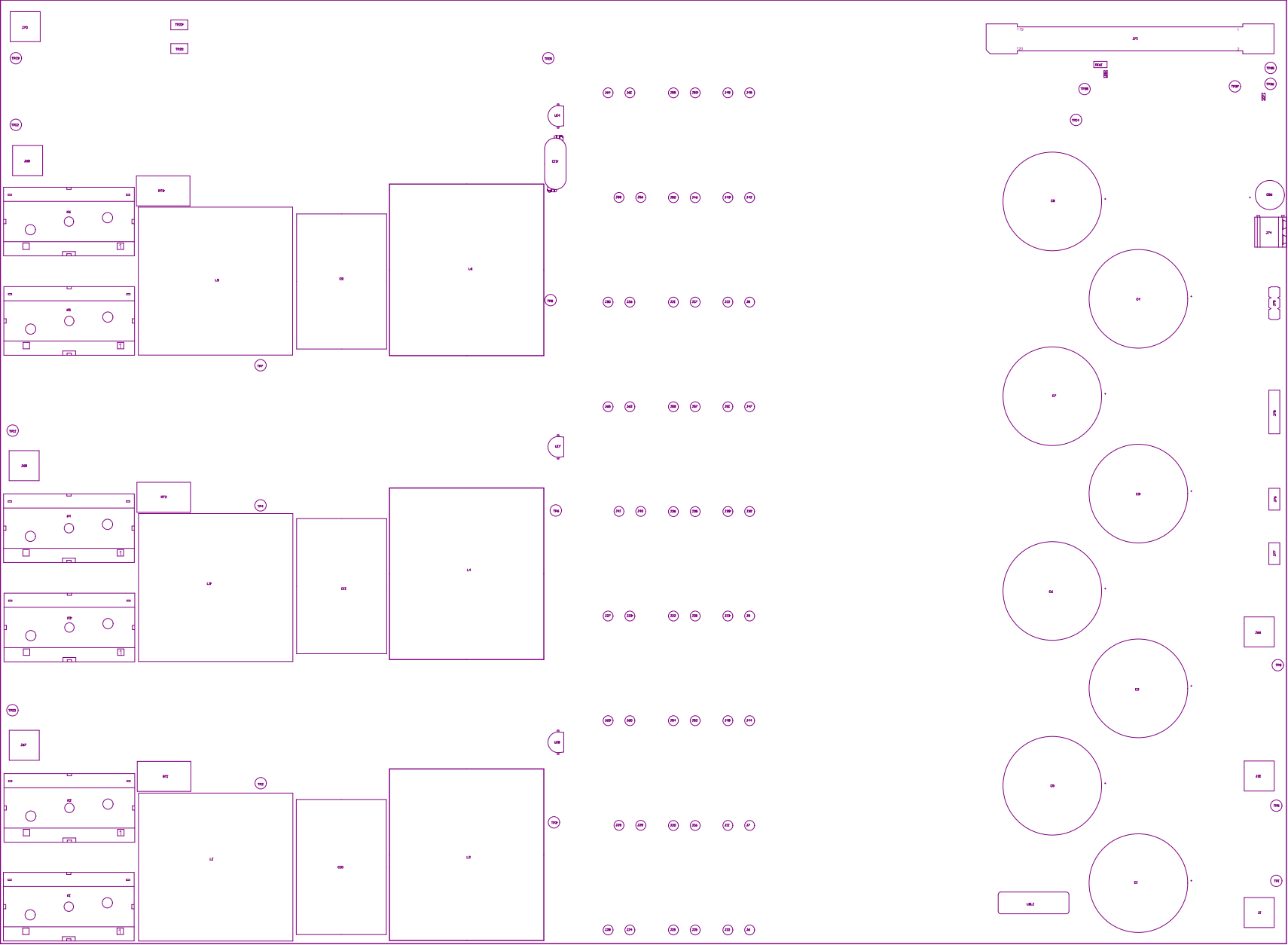
- 221

Small table in observation box after third seat. Seat shall be 2 ft in front. Seat shall be per the Label Table in the TOP assembly.
- 222

These assemblies are 100 acceptable, 100 production shall be observed.
- 223

These assemblies must be clear and free from dust and all contaminants, but if no clear view is not acceptable.
- 224

These assemblies must comply with unannounced inspection (100-400) Class 2, unless otherwise specified.



COMPONENTS VIEWED FROM TOP MUST BE IN COMPLIANCE WITH THE TOP ASSEMBLY.

VIEW VIEWED FROM TOP MUST BE IN COMPLIANCE WITH THE TOP ASSEMBLY.		BOARD NO.		1000-0000-00		REV.		02		DATE REV.		Not in version control	
LAYER NAME =		PB Assembly Top		TOP NO.		1000-0000-00							
PLAT NAME =		Top Assembly Drawing		REVISIONS		1		3-10-2022		IS BUILT BY		TECHNICALS	

